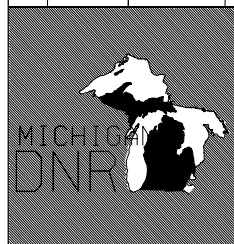
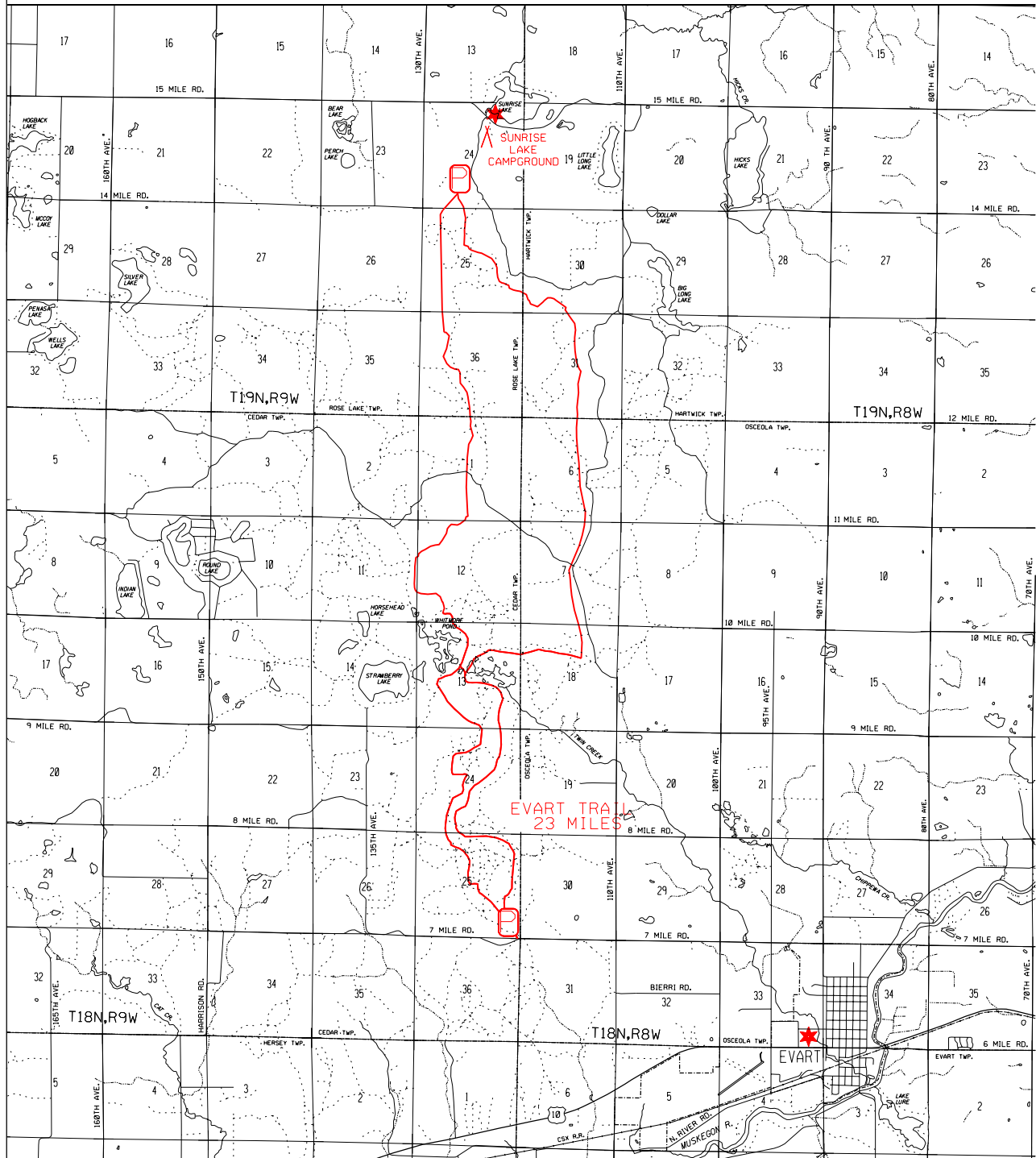







# EVART MOTORCYCLE TRAIL


## OSCEOLA COUNTY FOREST MANAGEMENT DIVISION



-  ORV TRAIL - for ORV's less than 50" in width - off road motorcycles. (DNR license required)
-  ORV ROUTE - for ORV's of all sizes. (DNR license required unless licensed by Secretary of State)

**LEGEND**

-  PARKING
-  CAMPGROUND
-  GAS - FOOD

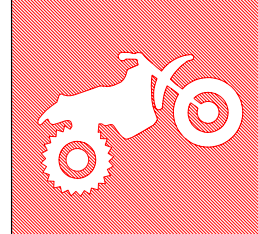


0 5 1  
SCALE IN MILES

**LOCATION**



MAY 2005



**ADVISORY:** Trails and Routes have two-way traffic.

**DISCLAIMER:** Trails shown on this map are an approximate representation of the trail system at the time of publication and may not reflect current ground conditions. **STAY ON SIGNED TRAILS ONLY!**